

Vision for Colorado CTE

Colorado Career & Technical Education (CTE) leverages workforce and education systems so that each learner has quality CTE experiences leading to lifelong career success.

CTE Stakeholders across the state helped develop a statewide vision to position CTE as a driver in the state's education, workforce, and economic priorities.

Goals

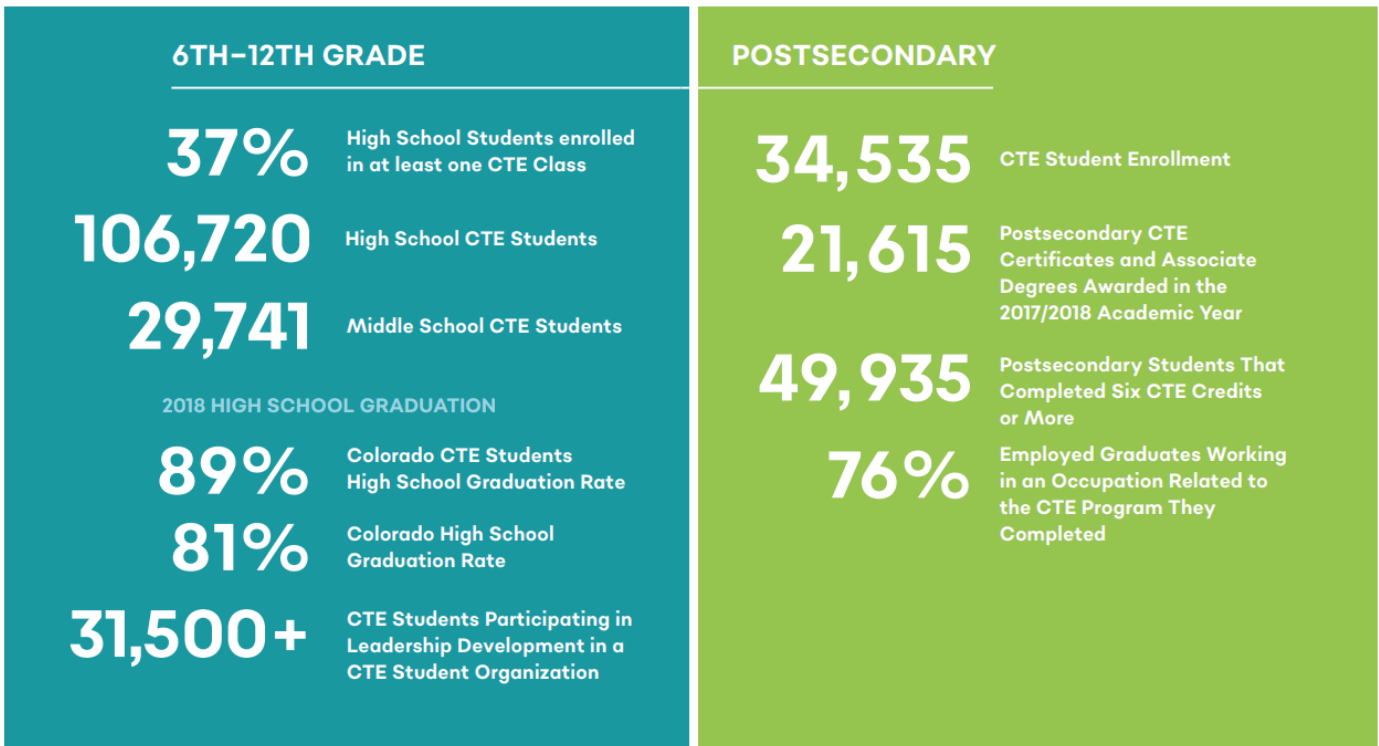
GOAL 1	Career Advisement & Development – Ensure each Colorado Learner has access to ongoing career advisement and development.
GOAL 2	Instructor Recruitment & Retention – Develop and ensure a viable pipeline of CTE instructors to fill the educator positions at the middle school, secondary, and postsecondary levels.
GOAL 3	Partnerships – Prepare Colorado's future workforce through transformational partnerships.
GOAL 4	Quality Programs – Elevate the quality of CTE programs to support each learner's skill development and meet industry needs.
GOAL 5	Work-Based Learning – Ensure access to meaningful work-based learning opportunities for each CTE learner.
FOUNDATIONAL ELEMENTS	EQUITY & ACCESS Create opportunities for each learner to access quality CTE programs and distribution of CTE programs throughout the state.
	INCLUSIVITY Provide each learner with the opportunity to participate in a CTE program and decrease the gaps of CTE participation for target populations, non-traditional occupations, and geographic areas.

Purpose

Colorado's Strategic Plan for Career & Technical Education (CTE) will ultimately serve secondary and postsecondary learners in their preparation for meaningful careers, provide the state's employers with better prepared talent, and lend to the development of stronger communities. The CTE Strategic Plan will effectively guide the state's efforts over the next five years and will:

- **Highlight opportunities to engage stakeholders.**
- **Establish clear and consistent goals for the education and workforce systems.**
- **Provide the platform to communicate Colorado's CTE vision publicly.**

Colorado works with many partners and stakeholders involved in career education and workforce development initiatives. This creates an opportunity to enhance CTE programs and advance education, economic, and workforce systems by leveraging their experience and expertise. Advisory committees and sector partnerships are valuable partners in the CTE system. Partnering with these entities provides the opportunity to more effectively align CTE programs with the needs of business and industry.



What is your role in CTE?

An action plan can help you identify opportunities to work with CTE learners, instructors, and partners. As you develop an action plan at the local or state level, consider and document how you can:

1. Engage diverse stakeholders.
2. Establish priorities and goals for your local education and workforce system.
3. Evaluate the success of your CTE programs.
4. Focus on shared priorities, relevant and quality data, talent development, Postsecondary & Work Readiness (PWR) skills, and policy review and development.
5. Identify barriers to success including misalignment and policy and procedural related barriers.
6. Target state and federal CTE funding to support quality CTE programs in your area.

TO GET INVOLVED, contact Colorado CTE at the Colorado Community College System.

Address: 9101 East Lowry Boulevard
 Denver, Colorado 80230

Phone: (303) 620-4000

Email: cte@cccs.edu

Website: www.coloradostateplan.com